

SARALA BIRLA ACADEMY BANGALORE

FINAL EXAMINATIONS 2008 – 2009

Science

(One and half Hours)

Grade VI

Thursday, 26/03/2009

*Answers to this Paper must be written on this paper itself.
You will **not** be allowed to write during the first 15 minutes.
This time is to be spent in reading the question paper.
No further queries will be entertained after this period.*

Name: School number:

SECTION I (40 Marks)

Attempt ALL the questions

Question 1: Name the following:

[5]

a) Longest bone in our body

.....
.....

b) A disease causes due to lack of vitamin D

.....
.....

c) A modified stem that stores food in plants

.....
.....

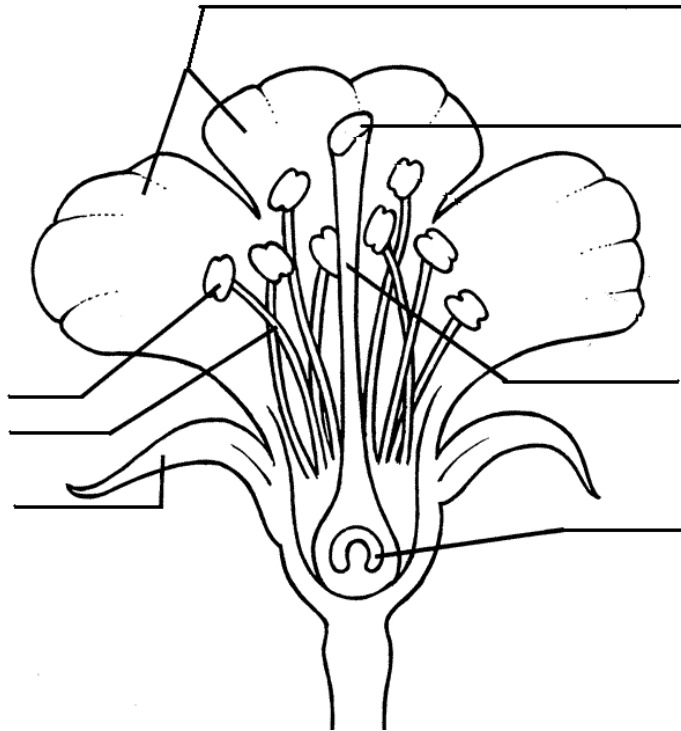
d) An animal that uses 'setae' for its movements

.....
.....

e) The physical unit that is used to measure the distance between two celestial objects

.....
.....

Question 2: Label the following diagram to identify the various parts of the complete flower [7]



Question 3: Question Observe the diagram that is a part of human skeleton on the right hand side and then answer the following questions: [5]

a) What types of joints are present in A?

.....

b) What is the name of the bone B?

.....

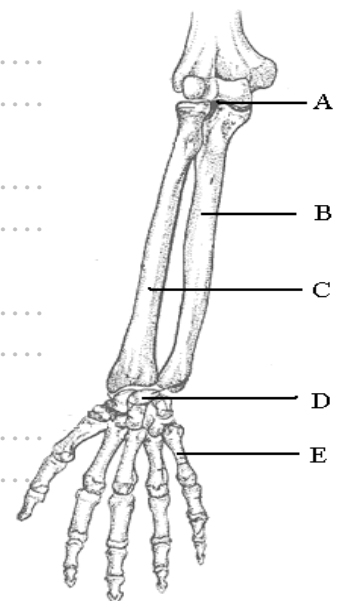
c) What is the name of the bone C?

.....

d) What type of joint is present at the point D?

.....

e) What is the name of the group of bones pointed by E?



Question 4: One of the items in the following group does not match with the others, which they all have in common. Find out and encircle the odd item in the group and reason why do you feel that is an odd entry [5]

a) Nose, Ear, Wind-pipe, Lungs

.....
.....

b) Earthworm, Snail, Tiger, Hydra

.....
.....

c) Femur, Radius, Ulna, Cranium

.....
.....

d) Beriberi, Goitre, Iodine, Rickets

.....
.....

e) Bar-magnet, Compass, Torch, Horse-shoe magnet

.....
.....

Question 5: Draw the diagram of a battery or dry cell and label various parts of it in the given space below [8]

Question 6: Fill in the blanks:

[5]

- a) Organisms made of more than one _____.
- b) A partial shadow formed from a wider light source is called _____
- c) The space or length of the stem in between each node is called _____
- d) Any normal light source produces _____ type of beams
- e) A chemical ore of iron with formula Fe_3O_4 named after its magnetic quality is _____
- f) When you read a ruler from a wrong angle you make _____ error
- g) _____ is a small handy home appliance that uses an electrical cell to produce light
- h) An object that gives off its own light is known as _____
- i) The function of stem includes conduction of water, conduction of food, support, preparation of food and sometimes _____
- j) A haphazard motion in any possible direction like bee's dancing movement is known as _____

Question 7: Match the following:

[5]

Column 1	Column 2	Correct answer
Proteins	Anaemia	
Carbohydrate	Ostroporosis	
Iron	Kwashiorkor	
Iodine	Marasmus	
Calcium	goitre	

Section II (40 marks)

Answer any FOUR questions from this section

Question 8: Answer the following:

- a) Differentiate between transparent and translucent objects [2]

.....
.....
.....
.....

- b) Discuss the important of roughage in our diet [2]

.....
.....
.....
.....

- c) Write two advantage and two disadvantage of synthetic fibres [2]

.....
.....
.....
.....

- d) You are at the starting post of a 100m race and you hear the pistol shot. Identify the stimulus and response [2]

.....
.....
.....
.....

- e) What is an abiotic environment made of? [2]

.....
.....
.....
.....

Question 9:

a) Write three ways to demagnetise (lose its magnetic property) a magnet [2]

.....
.....
.....
.....

b) What is the most important function of leaf? [2]

.....
.....
.....
.....

c) Why does the stem of the cactus perform the functions of a leaf? [2]

.....
.....
.....
.....

d) Write one difference between aquatic and terrestrial habitat [2]

.....
.....
.....
.....

e) What is meant by heterotrops? [2]

.....
.....
.....
.....

Question 10:

a) What is pedicle? [2]

.....
.....
.....
.....

b) Differentiate between compound and mixture [2]

.....
.....
.....
.....

c) What are floating ribs? [2]

.....
.....
.....
.....

d) What are hydrophyte [2]

.....
.....
.....
.....

e) What advantage cotton has over synthetic fibres [2]

.....
.....
.....
.....

Question 11:

a) Give example of three roots where plants store food [2]

.....
.....
.....
.....

b) Why are the bones in the cranium fused [2]

.....
.....
.....
.....

c) Why are the bones in birds are hollow and light [2]

.....
.....
.....
.....
.....
.....

d) Name the muscle you use to lower your arm [2]

.....
.....
.....
.....

e) What type of movement does the ball and socket joint allows [2]

.....
.....
.....
.....
.....
.....

Question 12:

a) What functions do the salt gland on the leaves of halophyte serves? [2]

.....
.....
.....
.....
.....
.....

b) Match the following from column 1 and 2 and rewrite the correct answer [8]

Column 1	Column 2	Correct answer
Phalanges	Shoulder blade	
Tibia	Knee cap	
Sternum	Collarbone	
Femur	Upper arm bone	
Clavicle	Fingers and toes	
Scapula	Upper leg bones	
Humerus	Breast bones	
Patella	Shin bone	

Question 13:

a) What is loam made of [2]

.....
.....

b) Which part of the seed grows to form the shoot in a plant? [2]

.....
.....

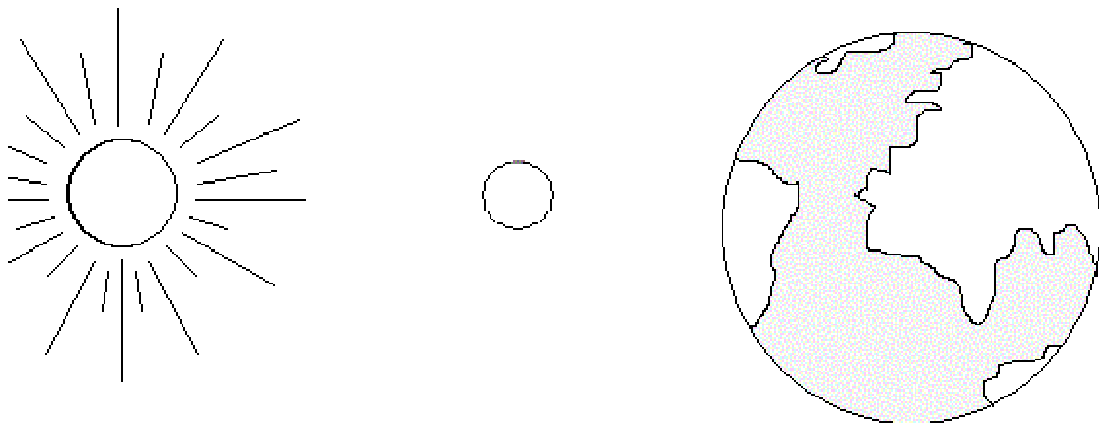
c) Write the four main function of root [2]

.....
.....

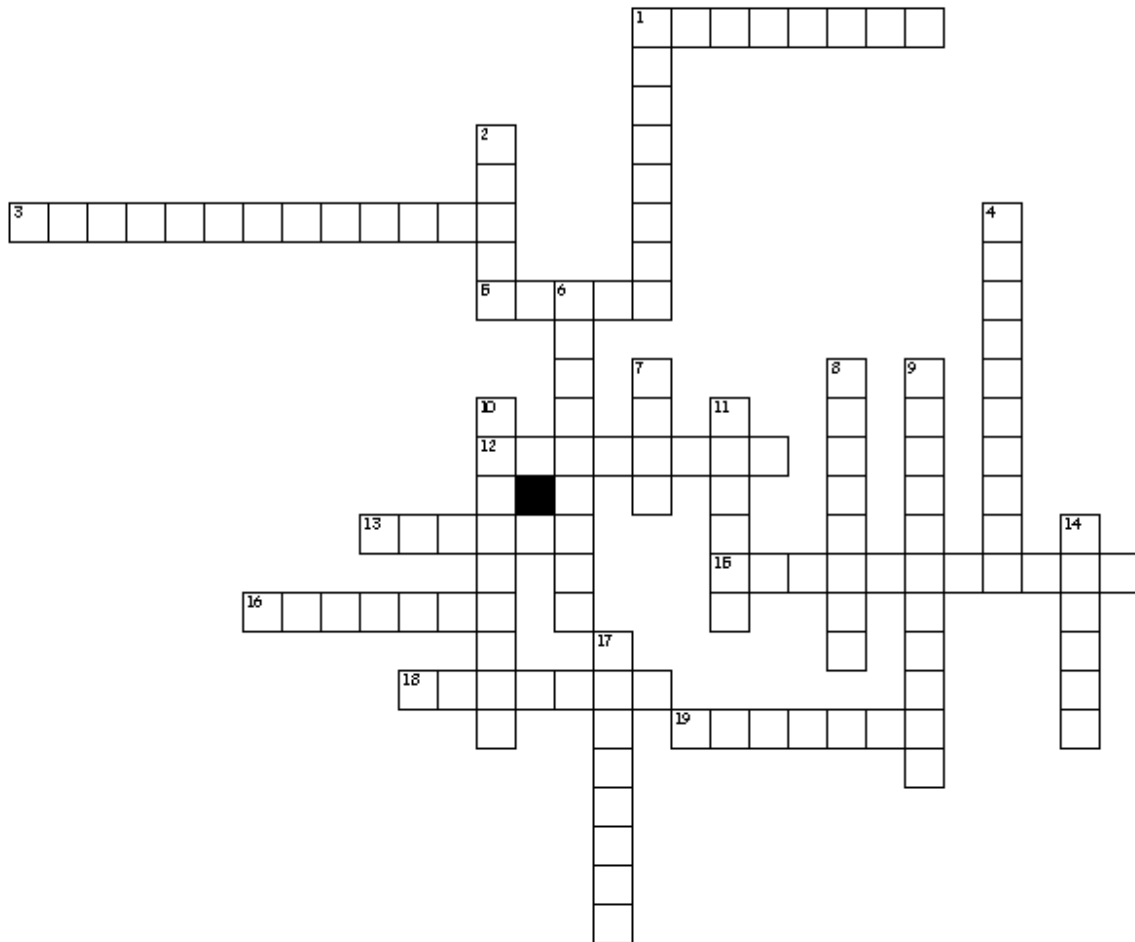
d) Differentiate between luminous objects and non-luminous objects [2]

.....
.....
.....
.....
.....

e) Given the diagram of sun, moon and earth. Draw the diagram of umbra and penumbra created on the surface of earth and thus mark the region with pencil from where the complete solar eclipse and partial solar eclipse will be visible. [2]



Question 14: Fill in the following crossword puzzle using the clues given below
[10]



Across

1. Laser beam is an example of this type of beam
3. Organisms made of more than one _____.
5. Multi-cellular organism has looping or somersaulting motion, using tentacles
12. When you read a ruler from a wrong angel you make this type of error
13. A group of cells specialised to perform a function
15. The motion in which a body moves to and fro about a fixed point
16. This group of animals have six jointed legs and wings.
18. This is also known as Breastbone
19. This is also known as kneecap

Down

1. A partial shadow formed from a wider light source

2. A small handy home appliance that uses an electrical cell to produce light
4. Any normal light source produces this type of beams
6. When sunlight falls on a magnifying glass this beam is produced
7. The structural and functional unit of life.
8. Day night on earth happens because of this type of motion of earth
9. Organisms made of one cell.
10. Foot, pounds belong to this type of standard unit system.
11. A haphazard motion in any possible direction like bee's dancing movement
14. A change in position of a body with time with respect to another stationary body
17. An object that gives off its own light